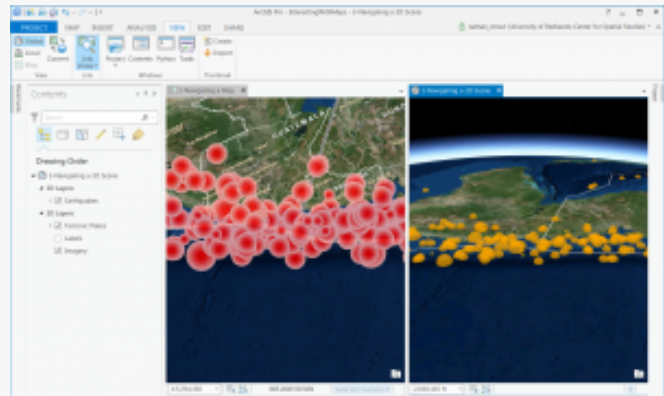


Getting to Know Pro - Interacting With Maps



Getting to Know ArcGIS Pro – Lesson 1: Interacting With Maps

This activity introduces the ArcGIS Pro interface, how to work with panes and layers, navigating a 2D and 3D map, linking views, and some common tools and functions.

Skills

Open existing project	Auto Hide button
Hide/show layers	Reorder layers
Layer properties: Change Layer name	Identify Tool
Layer properties: Examine data source information	List By Data Source button
Save As project	Open existing map
2D Zoom and Pan	Change scale with scale dropdown
Locate tool	Use and create bookmarks
3D zoom, pan, tilt, rotate and roam	Linking views
Docking map panes	Add/Change Basemaps
Measurement tool	Labeling Features



[Getting to Know ArcGIS Pro – InteractingWithMaps](#)



[GTKPro Lesson 1 Data](#)